

Task Force on Inventories WMO INTERGOVERNMENTAL PANEL ON CLIMATE CHANGE UNEP

IPCC

IPCC National Greenhouse Gas Inventory Programme

Other material to assist users of the IPCC Guidelines

*SB28 Side Event
9 June 2008*

*Kiyoto Tanabe, Technical Support Unit
IPCC National Greenhouse Gas Inventories Programme*

Task Force on Inventories WMO INTERGOVERNMENTAL PANEL ON CLIMATE CHANGE UNEP

Various tools/documents available

- Development of 2006 Guidelines Software is under way.
- Various other tools/documents are already available.
 - Looking for EFs or other parameters?
 - Explore the ***Emission Factor Database (EFDB)***!!
 - Hoping to learn about 2006 Guidelines quickly?
 - Read the ***Primer of 2006 IPCC Guidelines***!!
 - Needing clarifications about specific issues?
 - Visit the webpage of ***FAQs***!!
 - Looking for generic information about TFI, etc?
 - Read the ***Brochures***!!

Task Force on Inventories
IPCC
WMO
INTERGOVERNMENTAL PANEL ON CLIMATE CHANGE
UNEP

Emission Factor Database (EFDB)

IPCC NGGIP Logged user: Not logged in

IPCC web sites

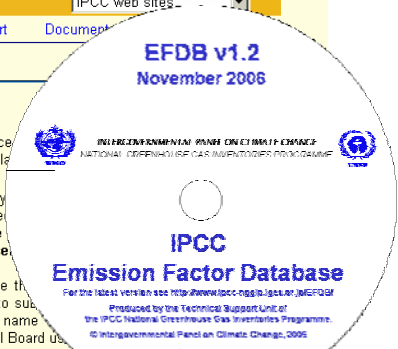
Home Login Find EF Single Input Mini-Batch Import Document

Main Page

Welcome to EFDB!

All users are kindly invited to pay attention to this note. Guidance on how to use the EFDB is available in the User Manual, which can be downloaded (click [here](#)). The EFDB User Manual will be made available in the near future.

- **Nature of EFDB:** EFDB is meant to be a recognised library of emission factors and other parameters with background documentation or technical references for estimating greenhouse gas emissions and removals. **The data and documentation appropriately will always remain with the users themselves.**
- **Request for data input:** Users are encouraged to provide their own emission factors or other related parameters. If you wish to submit your data, please contact the [Technical Support Unit](#) to obtain your login name and password. All proposals will be subject to decisions by the EFDB Editorial Board.
- **Terminology:** EFDB is a database on various parameters to estimate emissions by sources and removals by sinks of greenhouse gases. For convenience, however, the term "Emission Factor" or its abbreviation "EF" is sometimes used to represent parameters in this database generally.



CDROM version

Web version - <http://www.ipcc-nggip.iges.or.jp/EFDB/>

Task Force on Inventories
IPCC
WMO
INTERGOVERNMENTAL PANEL ON CLIMATE CHANGE
UNEP

Emission Factor Database (EFDB)

- **Library** of well documented emission factors and other parameters which
 - Evolves dynamically through contributions of new data from researchers, scientists, industry...
 - Provides a wide variety of emission factors and other parameters with background documentation or technical references so that users can select and use appropriate data **on their own responsibility.**
- **Communication platform** for distribution and commenting on new research and measurement data

Emission Factor Database (EFDB)

- **Default data presented in 2006 Guidelines can be searched for. (New!!)**
- Also, the default data from 1996 Guidelines, Good Practice Guidance reports are contained.
- Additional data from the global scientific and inventory society.
- New data will be evaluated for acceptance by EFDB Editorial Board.

Emission Factor Database (EFDB)


- You can search for not only “emission factors” but also the other types of parameters that can be used in calculation.
- Some types of activity data (e.g., consumption on F-gases as ODS substitutes) will likely be also made available in some way.
- IPCC is planning to hold a series of data collection meetings - more and more useful data will be included in the near future.
- **EFDB keeps evolving!!**

Task Force on Inventories
IPCC

INTERGOVERNMENTAL PANEL ON CLIMATE CHANGE
UNEP
WMO

Primer of 2006 IPCC Guidelines

- Distributed at the IPCC stand
- Also, downloadable from NGGIP website



<http://www.ipcc-nggip.iges.or.jp/support/support.html>

Task Force on Inventories
IPCC

INTERGOVERNMENTAL PANEL ON CLIMATE CHANGE
UNEP
WMO

Primer of 2006 IPCC Guidelines

- Provides introduction and explanation of the 2006 IPCC Guidelines
- Consists of two parts:
 - “*Using the 2006 Guidelines*” explains how to make a *good practice* inventory.
 - Elements of GHG inventories
 - Inventory process and management
 - Step-by-step inventory compilation
 - “*Transition from the 1996 Guidelines*” explains how to move from 1996 Guidelines and GPGs.
 - Summary and highlights of major improvements
 - Changes in categorisation

UNEP
INTERGOVERNMENTAL PANEL ON CLIMATE CHANGE
Task Force on Inventories
IPCC

FAQs

<http://www.ipcc-nggip.iges.or.jp/faq/faq.html>

The screenshot shows the IPCC National Greenhouse Gas Inventories Programme website. The header includes the IPCC logo and the text 'INTERGOVERNMENTAL PANEL ON CLIMATE CHANGE National Greenhouse Gas Inventories Programme'. A navigation menu on the left lists various sections: IPCC-NGGIP Home, Organization, Technical Support Units, NGGIP Publications, Meetings, Support to Inventory Compilers, Links, Emission Factor Database (EFDD), and Electronic Discussion Group (EDG). The main content area is titled 'Frequently Asked Questions' and contains a list of questions and answers. The first question is 'Q1. What is the role of the IPCC in Greenhouse Gas Inventories and reporting to the UNFCCC?'. The answer explains that the IPCC has generated methodology reports and provides scientific and technical advice. Other questions include 'Q2. How does the IPCC produce its Inventory Guidelines?', 'Q3. What are the required steps to be taken to have an inventory methodology accepted by the IPCC?', 'Q4. How can new data and information be taken up by the IPCC NGGIP?', 'Q5. How do greenhouse gases affect the atmosphere?', 'Q6. What are the major greenhouse gases?', 'Q7. Why is water vapour not covered by the IPCC Guidelines?', 'Q8. How can you compare emissions of different gases?', 'Q9. Is reporting of GHG limited to six gases?', and 'Q10. What are precursor gases? Do we need to estimate for these for inclusion in the GHG inventory of the AFOLU Sector?'.

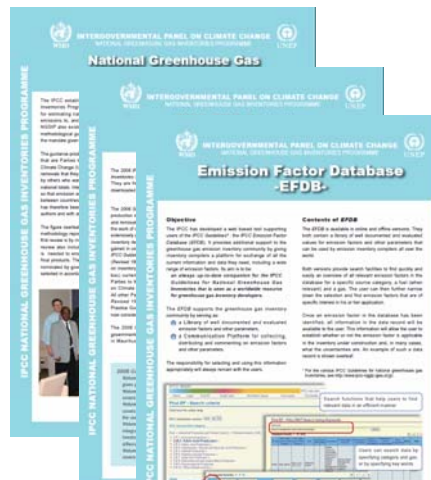
UNEP
INTERGOVERNMENTAL PANEL ON CLIMATE CHANGE
Task Force on Inventories
IPCC

FAQs

- List of frequently-asked questions and answers
- Currently there are 55 Q&As
- Will be continuously updated to include more Q&As
- Worth visiting when you have some questions about specific issues related to IPCC Guidelines

Brochures


- Distributed at the IPCC stand
- Also, downloadable from NGGIP website
- 3 brochures available:
 - National Greenhouse Gas Inventories Programme (NGGIP)
 - 2006 IPCC Guidelines
 - Emission Factor Database (EFDB)



<http://www.ipcc-nggip.iges.or.jp/support/support.html>

Brochures

- Brochure on NGGIP
 - NGGIP mandate, Process of producing inventory guidance, Future activities, etc
- Brochure on 2006 Guidelines
 - Contents, Major improvements, etc
- Brochure on EFDB
 - Objective, Contents, Procedure for submission and evaluation of data, etc
- These brochures will be useful:
 - To quickly learn about NGGIP, 2006 GLs and EFDB
 - To raise awareness in your country (in particular among your colleagues)



Task Force on Inventories
IPCC

WORLD HEALTH ORGANIZATION
WHO

INTERGOVERNMENTAL PANEL ON CLIMATE CHANGE

UNITED NATIONS ENVIRONMENTAL PROGRAM
UNEP

Thank you!!